

# Mod-Shock™ Test on Pole 473E



- Object of test
- To correctly determine
- The internal defects in pole 473E
- Result
- Mod-shock correctly identified the defects, as to the location and severity of the defects

# Mod-Shock™ Test on Pole 473E

- The pole was tested on the ground
- The results of the test were noted
- The defect areas were marked up on the pole prior to any cutting up of the pole
- Externally the pole looked good

# ModShockPole

# Mod-Shock™ Test on Pole 473E

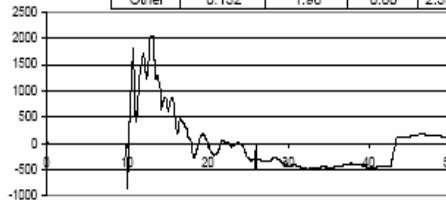
Test No B Pole No: yard273 B yard Model  
25 Kn to 20 Kn BM 199 Stressed Elevated

## Equivalent Solid Section

## Fixed Diameter Equivalent

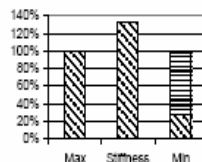
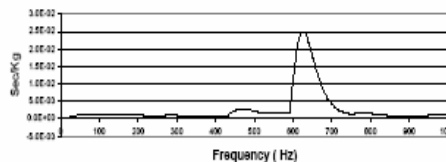
Depth	Diameter	Wall	Rating	Cap kN	SM cm3
8.0	0.280	140	1	33	2,155
8.0	0.280	140	1	33	2,155
8.0	0.280	140	1	33	2,155
8.0	0.280	140	1	33	2,155
8.0	0.280	140	1	33	2,155
7.5	0.237	70	2	35	1,307
7.0	0.314	180	1	38	3,027
6.6	0.284	140	1	40	2,238
5.8	0.324	180	1	45	3,330
5.7	0.237	70	2	48	1,307
5.5	0.269	100	1	48	1,921
5.5	0.261	90	1	48	1,751
4.3	0.340	170	1	61	3,850
4.3	0.314	180	1	62	3,027
3.8	0.203	40	3	69	825
3.6	0.221	50	2	72	1,054
3.2	0.244	70	2	83	1,425
3.0	0.270	100	1	87	1,927
2.7	0.184	30	3	97	610
1.9	0.132	20	4	137	228
1.4	0.284	140	1	---	2,238
1.0	0.314	180	1	---	3,025
0.5	0.403	200	1	---	6,439
-0.1	0.324	180	1	---	3,330
-0.2	0.323	180	1	---	3,320
-0.5	0.340	170	1	---	3,850
-0.6	0.221	50	2	---	1,054
-0.9	0.244	---	---	---	1,425
-1.1	0.132	---	---	---	228

Location	Diameter m	G. Level m	Length m	Z-mod mm3	B.M. kN.m
Above	0.280	0.52	2.49	2.2E+08	3.8E+08
Below	0.280	-0.15	1.83	2.2E+08	3.8E+08
Other	0.132	1.98	0.00	2.3E+05	2.3E+07



Diameter	280
Stiffness	6.31
Emax	4.77
Emin	1.33
Rating	Wall
4	30
3	50
2	75

Climb Status DUMP 750 1000 10 Programme: 8 9.975 8 0 0  
Integrity Testing Pty. Ltd. PowerCor VB Vers 11  
Http://www.integritytesting.com.au Email: info@integritytesting.com.au

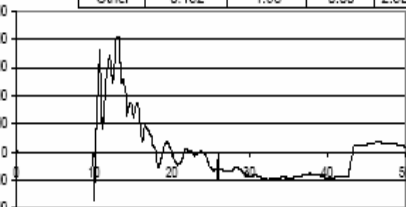
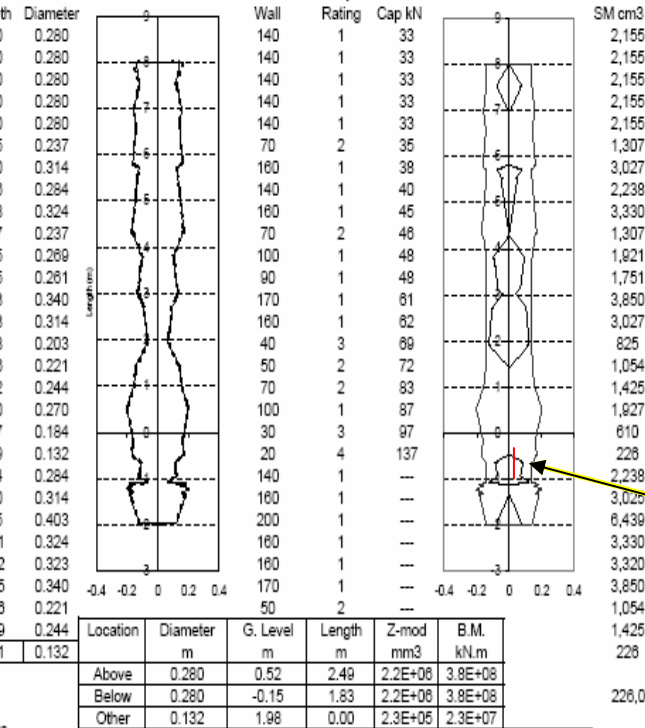


- Standard Result
- Defects at 0.9
- Defects at 3.8
- Defects at 4.6
- Defects at 9.5
- All measurements from the butt.
- These were marked on the pole prior to cutting up.

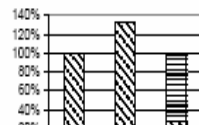
lo	B	Pole No:	yard273 B	yard	Model
		25 Kn to	20 Kn BM	199 Stressed Elevated	

### Valent Solid Section

### Fixed Diameter Equivalent



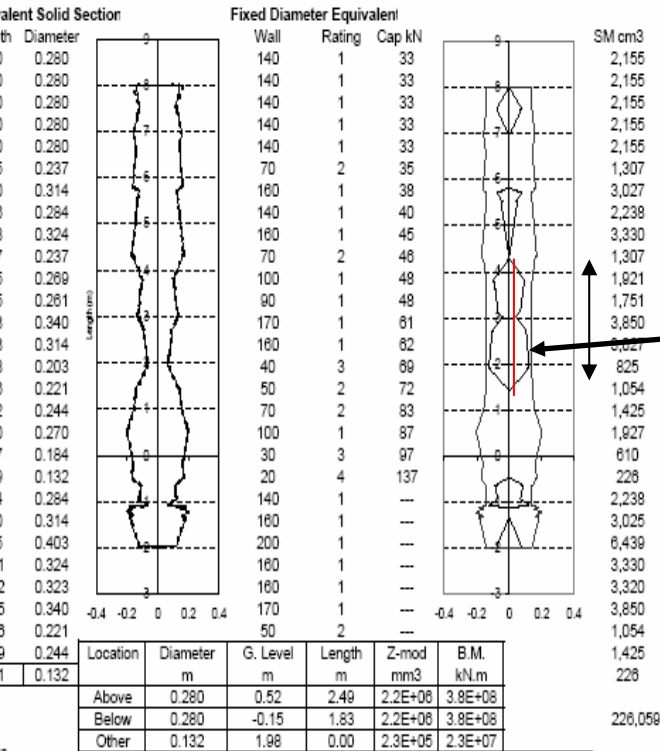
status      Caution Check before climbing  
                  750      1000      10      8      9.975      8  
 by Testing Pty. Ltd      Programme:      PowerCor VB    Vers 11  
 www.Integritytesting.com.au      Email: info@integritytesting.com.au



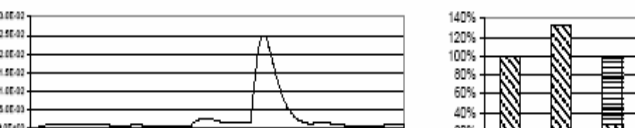
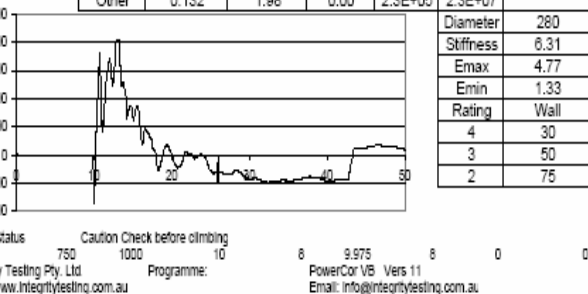


# ModShockPole

Pole No: yard273 B yard Model  
25 Kn to 20 Kn BM 199 Stressed Elevated



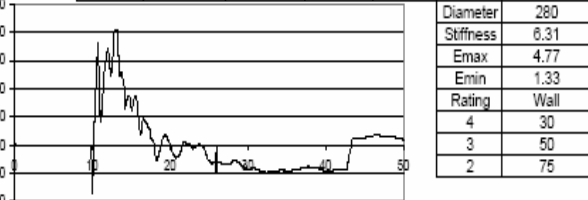
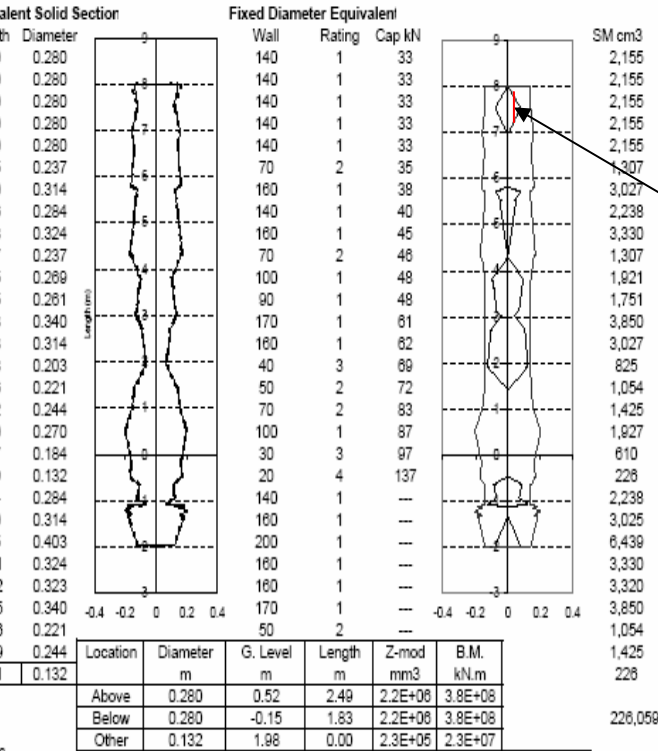
3.5m from butt



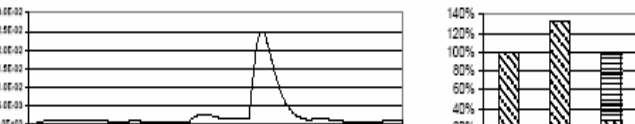


# ModShockPole

lo B Pole No: yard273 B yard Model  
25 Kn to 20 Kn BM 199 Stressed Elevated



status Caution Check before climbing  
750 1000 10 6 9.975 6 0 0  
Testing Pty. Ltd Programme: PowerCor VB Vers 11  
www.integritytesting.com.au Email: info@integritytesting.com.au



# Mod-Shock Test on Pole 473E

- Conclusion
  - Mod-Shock™ Correctly identified the defects
  - To size and location
  - Also measured the section modulus
  - Capacity at defect < Required for purpose of use