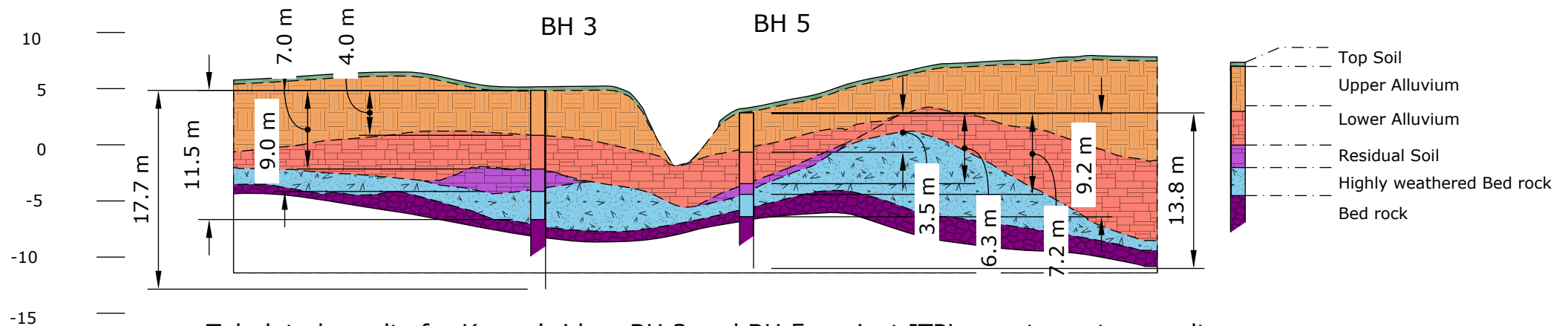


# Inferred Geotechnical section from bore hole data

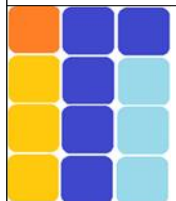


Tabulated results for Korn's bridge, BH 3 and BH 5 against ITPL penetrometer results.

Note: information provided to ITPL after submission of report

Depth ITPL	BH 3	RMS soil type	RMS N values	IT penetrometer Kpa values
GL to 4.0m	Gl to 3.2m	Silty clay	N1 to N4	8 to 25
4.0m to 7.0	3.2m to 6.6m	Sandy gravel	N23 to N29	10 to 60
7.0m to 9.0m	6.6m to 9.2m	Silty Clay	N20 to N22	25 to 200
9.0 m to 11.5m	9.2m to 10.5m	Siltstone fractured	N32	320
Toe of the pile 11.8m				
11.5n	10.5m	rock		up to 600

	BH 5	RMS soil type	RMS N values	IT penetrometer Kpa values
GL to 3.5m	Gl to 3.5m	Gravelly sand	N8	8 to 50
3.5m to 6.3m	3.5 to 6.3m	Sandy gravel	25/120 20/100	20 to 60
6.3 to 7.2m	6.3m to 7.3m	Silty Clay	30/100	20
7.2 to 9.8m	7.4m to 9.5m	Siltstone fractured	350Kpa	250Kpa
Pile Toe 7.6m				
9.8m onwards	9.5 onwards	rock		



**Integrity Testing Pty Ltd**

ABN 66 061 419 985 PO Box 1299 Bendigo Central Vic 3552

Victoria, Australia Tel: 03 54440782 Fax: 0354413810

Email : [info@integritytesting.com.au](mailto:info@integritytesting.com.au)

Web: [www.integritytesting.com.au](http://www.integritytesting.com.au)

Mod-Shock® penetrometer test

02/09/2019